



D & C
MILANO

ICONICA



ICONICA

La collezione Iconica è un viaggio tra accurata ricerca dei materiali e lavorazioni innovative. Il design tessile di C&C Milano gioca con fibre e disegni raffinati e racconta la preziosità dei loro dettagli.

Iconica accoglie lo spettatore in un'ambientazione tessile fatta dei disegni e dei pattern che hanno scandito la storia di C&C Milano che, giocando con l'accostamento di materiali e colori puri, evoca un'atmosfera senza tempo. La nuova collezione di C&C Milano viaggia su due binari paralleli: impiego di motivi propri dell'identità della Maison e loro declinazione in tessuti contemporanei, dalle eccellenti qualità e performance tecniche.

Una linea pensata per vestire sia gli interni che gli spazi esterni.

Il disegno simbolo della Maison milanese, il carciofino, decora la soffocissima lana in doppia altezza Sir Cardo declinata in 6 tinte delicate, per vestire un letto semplice ed elegante o la finestra in modo inaspettato e prezioso. Sir Pied de Poule e Sir Prince of Wales completano con motivi classici in beige. Nisida, Driade e Ortigia creano nuove prospettive di stile in camera da letto: pattern geometrici e floreali in tre dimensioni danno vita a cottoni matelassé luminosi, dal gusto contemporaneo.

Puro lino per una batavia classica dalla collezione C&C che si veste di nuovi colori vivaci, su fondo naturale e bianco avorio. Carrara e Carrara Millerighe sono tessuti da rivestimento resistenti e ricercati.

I tessuti della famiglia Rua, jacquard tecnici in fibra polipropilenica, offrono nuove soluzioni decorative per l'outdoor e il contract ma anche per gli interni grazie alla facilità di manutenzione. Motivi e colori iconici della collezione C&C decorano questi tessuti: Samurai micro-pattern geometrico, Safari ispirato alle linee della natura, Pipistrello dal motivo astrattamente animalier, Chopper e Scooter con stilizzati tratti botanici e Cerbero, intramontabile pied-de-poule.

Il vocabolario tessile di C&C Milano si completa con una riga sdraio flame-retardant, Arsenale, essenziale, dai colori maschili ed eleganti; e con un velo, Faro, 100% solution dyed acrylic per l'outdoor per definire atmosfere pulite e rispondere ad ogni esigenza di progettazione e d'uso.

The Iconica collection is a journey of development, revisiting classic motifs and reinterpreting them in innovative ways.

C&C Milano's sensitivity to the textiles themselves, experimenting with precious fibres, reaffirms the timeless elegance of the maison's key designs.

Iconica welcomes the viewer into a textile world made up of designs, both past and present, that have landmarked the history of C&C Milano.

The new collection goes on two parallel tracks with the use of C&C's classic motifs in new contemporary fabrics, as always, developed in the highest quality yarns and technical advances.

A collection designed to dress both interior and outdoor spaces.

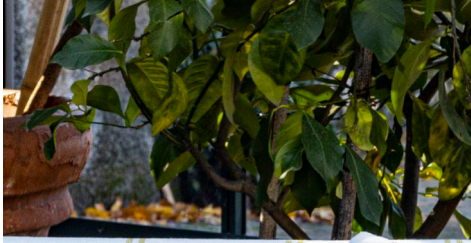
The iconic pattern of the Milanese Maison, the carciofino, decorates a double-width wool. Sir Cardo, available in 6 delicate hues, versatile to dress both a simple scheme and simultaneously sit with any elegant setting, be it in Home Collection or a window treatment. The Sir range also expands our popular patterns; Pied de Poule and Prince of Wales motifs in beige.

Nisida, Driade and Ortigia create new finish options for bedspreads: geometric and floral patterns in matelassé cottons, with a contemporary twist.

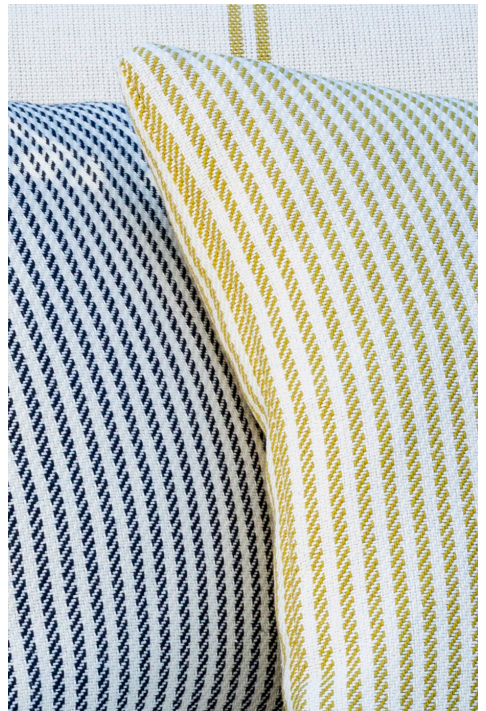
Carrara and Carrara Millerighe are heavy use, pure linen additions in a classic batavian weave, developed in bright colours, on a natural and ivory background.

Due to the popularity of the Rua range, our contract options now include additional colours in Samurai's geometric micro-pattern, Safari's abstract lines inspired by nature, Pipistrello's animal motif, Chopper and Scooter with stylized botanical decor and Cerbero, a timeless pied-de-poule.

The textile collection is completed with FR development. Our new deckchair stripe, Arsenale, developed in masculine and elegant colours. Outdoor sheer, Faro, to define minimal aesthetics and respond to every requirement of design and use.



Throw: Malta in SIR CARDO denim/white and Suede border cod.226298. Cushions: Ibisus in CARRARA MILLERIGHE white/pistachio 40x40 cm cod.226766, Karkade in CARRARA MILLERIGHE white/red with piping 40x40 cm cod.226765, Ibisus in CARRARA white/blue navy 50x50 cm cod.226764, Ibisus in CARRARA white/red 50x50 cm cod.226763







Cushions: Vence in DRIADE with ORTIGIA border and light green stitching 50x50 cm cod.226219, Ibisus in CARRARA MILLERIGHE white/pistachio 40x40 cm cod.226766, Ibisus in NISIDA white 40x40 cm cod.226230, Ibisus in CONTE sage 40x40 cm cod.226223, Ibisus in SIR CARDO onion/white 50x50 cm cod.226314.





Quilts: Thea in SIR CARDO onion/white VOLTERRA tassels and back in GRACE 200x140 cm cod.226306. Bed cover: Venice in DRIADE with ORTIGIA border and light green stitching 240x270 cod.226157. Bed linen set Marte.

Headboard in ARSENALE ivory/grey cod.223255. Quilted throw: Thea in SIR CARDO grey/white VOLTERRA tassels and back in GRACE 200x140 cm cod.226303. Bedcover: Vence in NISIDA with ORTIGIA border and grey stitching 240x270 cod.226159. Bed linen set Lego. Cushions: Ibiscus in SIR CARDO grey/white 50x50 cm cod.226312, Vence in NISIDA with ORTIGIA border and grey stitching 50x50 cm cod.226221, Ibiscus in NISIDA white 40x40 cm cod.226230, Ibiscus in ORTIGIA white 40x40 cm cod.226229, Ibiscus in DRIADÉ white 40x40 cm cod.226228. Curtains: Sambuco in MESSINA





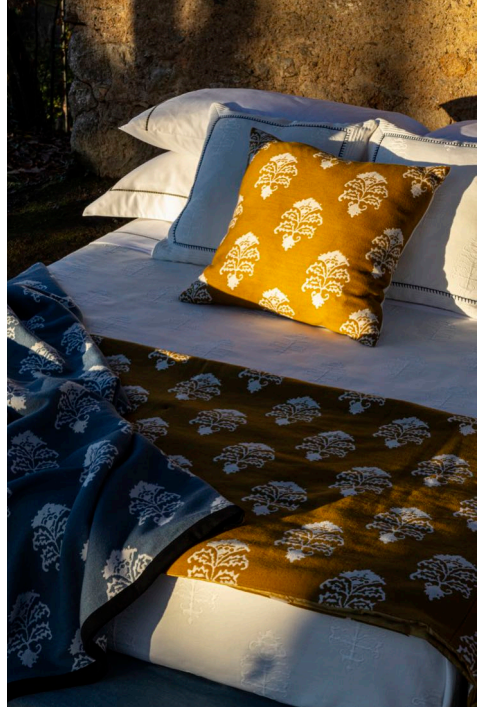


Cushions grass green/ivory: Gelsomino in RUA SCOOTER with RUA SAMURAI gusset 40x40 cm cod.226257, Gelsomino in RUA CHOPPER with RUA SAMURAI gusset 50x50 cm cod.226249, Ibisus in RUA SCOOTER (backside) cod.226281, Cushions mud/ivory: Camelia in RUA SAFARI and tassels, Gelsomino in RUA SCOOTER and RUA SAMURAI gusset 40x40 cm cod.226256. Cushions brick/ivory: Karkadè in RUA SAMURAI with RUA SIESTA piping 40x40 cm cod.226275, Gelsomino in RUA SCOOTER with RUA SAMURAI gusset 40x40 cm cod.226252, Gelsomino in RUA CHOPPER with RUA SAMURAI gusset 50x50 cm cod.226244





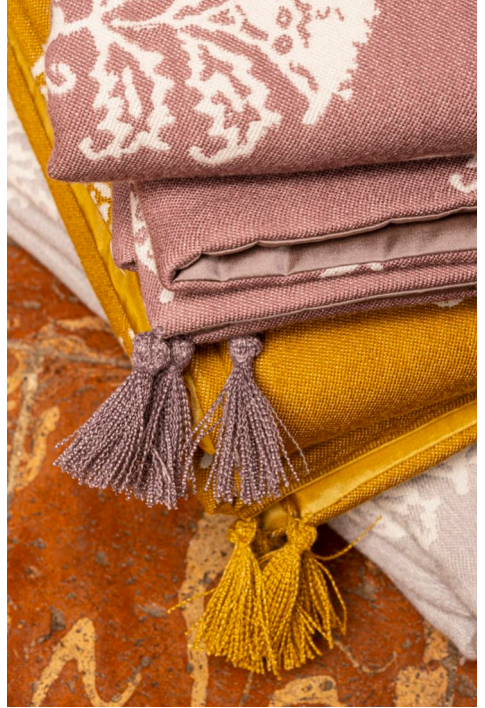
Carpet: Adda with CARDO design 300x400 cm cod.222382. Quilted cushion: Manarola in RUA SAFARI blue/ivory and RUA SAMURAI 190x80x10h cm cod.226760. Neckroll: Ibisus in RUA SAFARI blue/ivory and RUA SAMURAI 80x20d cm cod.226761, Ibisus in RUA PIPISTRELLO blue/ivory in RUA SAMURAI 80x20d cm cod.226762. Cushions blue/ivory: Camelia in RUA SAFARI with tassels 50x50 cm cod.226259, Karkade in RUA SAMURAI with piping 40x40 cm cod.226271, Verbena in HOLIDAY white with RUA PIPISTRELLO 40x40 cm cod.226289, Ibisus in RUA SCOOTER 40x40 cm cod.226277, Ibisus in RUA PIPISTRELLO 50x50 cm cod.226265, Gelsomino in RUA SCOOTER with RUA SAMURAI gusset 40x40 cm cod.226253, Gelsomino in RUA CHOPPER with RUA SAMURAI gusset. Cushions sunflower/ivory: Verbena in HOLIDAY white with RUA PIPISTRELLO 40x40 cm cod.226291, Verbena in HOLIDAY white with RUA SAFARI 60x40 cm cod.226285, Ibisus in RUA SCOOTER (backside) 40x40 cm cod.226279, Camelia in RUA SAFARI with tassels 50x50 cm cod.226261, Ibisus in RUA PIPISTRELLO 50x50 cm cod.226267, Gelsomino in RUA SCOOTER with RUA SAMURAI gusset 40x40 cm cod.226255, Gelsomino in RUA CHOPPER with RUA SAMURAI gusset 50x50 cm cod.226247



Throw: Malta in SIR CARDO denim/white with SUEDE border 140x180 cm cod.226298, Quilted throw: Thea in SIR CARDO curry/white VOLTERRA tassels and back in GRACE 200x140 cm cod.226305. Bed cover: Vence in DRIADE with ORTIGIA border and indigo stitching 240x270 cm cod.226158. Bed linen set Marte. Cushions: Vence in DRIADE with ORTIGIA border and indigo stitching 50x50 cm cod.226220, Ibisus in SIR CARDO curry/white 50x50 cm cod.226315.







Throw and quilts: Galapagos in SIR PIED DE POULE natural/white 270x240 cm cod.226301, Thea in SIR CARDO onion/white VOLTERRA tassels and back in GRACE 200x140 cm cod.226306, Thea in SIR CARDO curvy/white VOLTERRA tassels and back in GRACE 200x140 cm cod.226305, Thea in SIR CARDO natural/white VOLTERRA tassels and back in GRACE 200x140 cm cod.226304

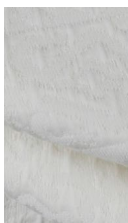




Cushions: Ibisus in SIR CARDO onion/white 50x50 cm cod.226314, Ibisus in SIR CARDO grey/white 50x50 cm cod.226312, Ibisus in SIR CARDO curry/white 50x50 cm cod.226315



NISIDA
DRIADE
ORTIGIA
100% Cotton
310 cm - 414 gr/mq



NISIDA Optical White 223259



DRIADE Optical White 225385



ORTIGIA Optical White 225386

SIR PIED DE POULE

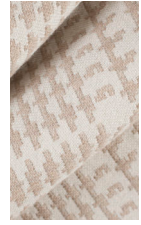
100% Wool
280 cm - 260 gr/mq



Natural/White 225658

SIR PRINCE OF WALES

100% Wool
280 cm - 260 gr/mq



Natural/White 225659

SIR CARDO

100% Wool
280 cm - 260 gr/mq



Thyme/White 225654



Orion/White 225655



Curry/White 225656



Denim/White 225657



Natural/White 225652



Grey/White 225653

CARRARA

100% Linen
145 cm - 700 gr/mq
Horizontal rpt 15,4 cm
Martindale 25000



White/Red 223285



White/Blue navy 223288



White/Pistachio 223286



White/Metal 223714



White/Chocolate 223715



Natural/Purple 223287



Natural/Yellow 223716



Natural/Blue 223717



Natural/Paprika 223718

CARRARA MILLERIGHE

100% Linen
150 cm - 765 gr/mq
Horizontal rpt 1,2 cm
Martindale 25000



Natural/Rosé 223723



White/Red 223724



White/Blue 223727



White/Pistachio 223725



White/Metal 223726



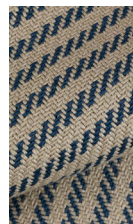
White/Chocolate 223728



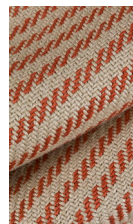
Natural/Purple 223729



Natural/Yellow 223730



Natural/Blue 223731



Natural/Paprika 223732

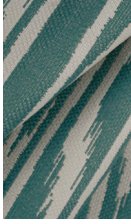


Natural/Rosé 223733

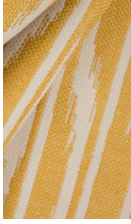
 **RUA**
SAFARI
 100% Polypropylene
 140 cm - 500 gr/mq
 Vertical rpt 28 cm
 Horizontal rpt 17,5 cm
 Martindale 40000



Blue/Ivory 223218



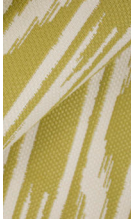
Lake/Ivory 223219



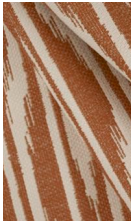
Sunflower/Ivory 223220



Mud/Ivory 223221



Grass green/Ivory 223222

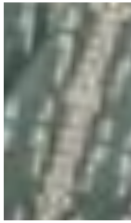


Brick/Ivory 223217

 **RUA**
SCOOTER
 100% Polypropylene
 140 cm - 500 gr/mq
 Vertical rpt 22 cm
 Horizontal rpt 24 cm
 Martindale 40000



Blue/Ivory 223211



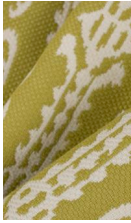
Lake/Ivory 223212



Sunflower/Ivory 223213



Mud/Ivory 223214



Grass green/Ivory 223215



Brick/Ivory 223210

 **RUA**
CHOPPER
 100% Polypropylene
 140 cm - 500 gr/mq
 Vertical rpt 32,5 cm
 Horizontal rpt 35 cm
 Martindale 40000



Blue/Ivory 223224



Lake/Ivory 223225



Sunflower/Ivory 223226



Mud/Ivory 223227



Grass green/Ivory 223228



Brick/Ivory 223223

 **RUA**
PIPISTRELLO
 100% Polypropylene
 140 cm - 500 gr/mq
 Vertical rpt 7 cm
 Horizontal rpt 9 cm
 Martindale 40000



Blue/Ivory 223230



Lake/Ivory 223231



Sunflower/Ivory 223232




Mud/Ivory 223233



Grass green/Ivory 223234



Brick/Ivory 223229

 **RUA**
SAMURAI
 100% Polypropylene
 140 cm - 500 gr/mq
 Vertical rpt 4 cm
 Horizontal rpt 4,5 cm
 Martindale 40000



Blue/Ivory 223204



Lake/Ivory 223205



Sunflower/Ivory 223206



Mud/Ivory 223207



Grass green/Ivory 223208



Brick/Ivory 222218

☀️ RUA
CERBERO
 100% Polypropylene
 145 cm - 305 gr/mq
 Horizontal rpt 14.8
 Martindale 40000



Ivory/Grey 223255

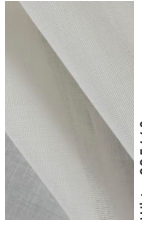


Ivory/Natural 223254



Ivory/Ultramarine 223257

☀️ FARO
 100% Solution Dyed
 Acrylic
 325 cm - 100 gr/mq



White 225660

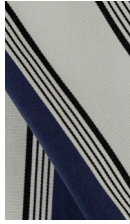
🔥 ARSENALE
 100% Trevira CS
 145 cm - 305 gr/mq
 Horizontal rpt 14.8
 Martindale 40000



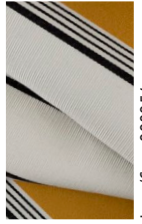
Ivory/Grey 223255



Ivory/Natural 223254



Ivory/Ultramarine 223257



Ivory/Curry 223256



CEC-MILANO.COM

