



C & C
MILANO

Embroidery



Embroidery

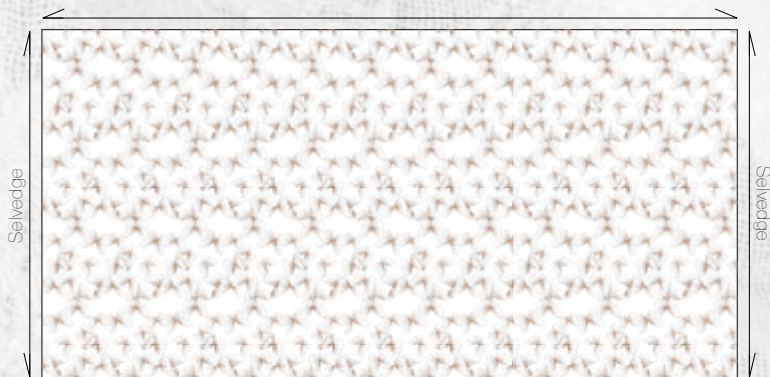
La collezione di tessuti ricamati C&C Milano è pensata per esaltare la naturale bellezza dei nostri lini. Texture compatte e impalpabili garze si vestono di delicati motivi ricamati. I disegni dei ricami evocano la preziosità dei coralli e degli elementi naturali, la lucentezza delle perle e il glamour delle paillettes, insieme a motivi ispirati ad iconici accessori dell'haute couture. Perfetti per confezionare preziosi accessori, tendaggi ed elementi decorativi. I tessuti ricamati C&C Milano sono realizzati con metodi artigianali.

The Embroidery Collection by C&C Milano is our couture range of linen. Structured textures, light weight gauze and fluid wool are used as the base for our patterned embroideries. Evoking the precious nature of coral, the dreamscape of stars, the sheen of pearls and glamour of paillettes; this collection is the hight of luxury and Italian artisanal craftsmanship.

Fabrics from this collections are sold by single panels of 4,2 mt/4,5 yards or by full piece of 14 mt/15,3 yards. We can not accept any orders of different quantities if not available in stock.

Cassiopea Broderie

Fabric Width 150 cm/59 inch



Vertical repeat
10,30 cm/4,05 inch

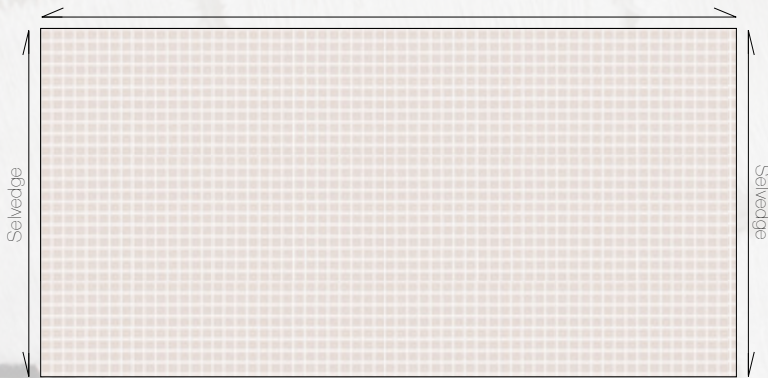
211301

Background Linen off white



Charleston

Fabric Width 135 cm/53 inch



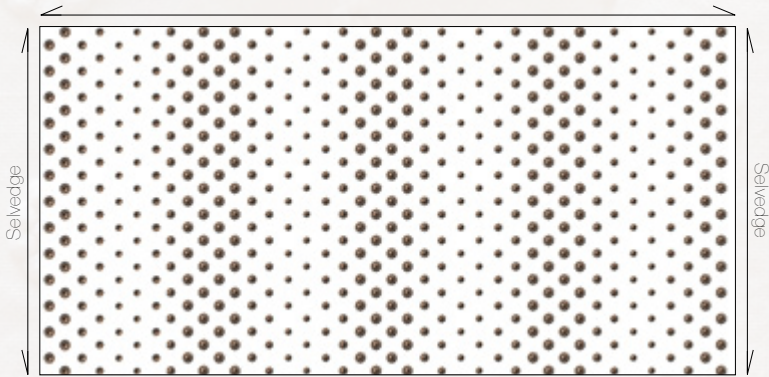
197532

Background Optical white



Coco

Fabric Width 150 cm/59 inch



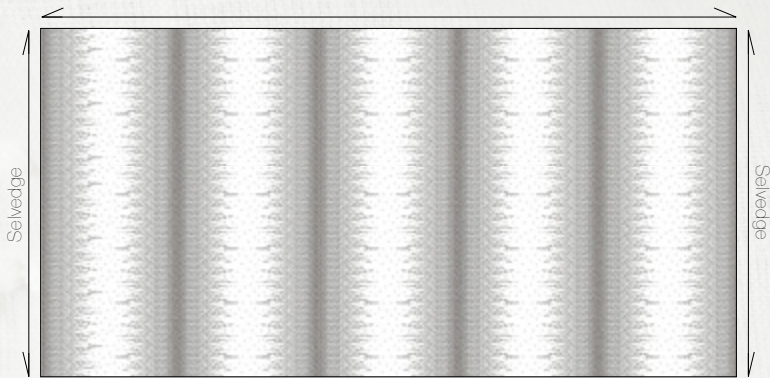
Repeat
34,50 cm/13,5 inch

175576

Background Maremma Natural White

Corallo

Fabric Width 300 cm/118 inch



Vertical repeat
55 cm/21,6 inch

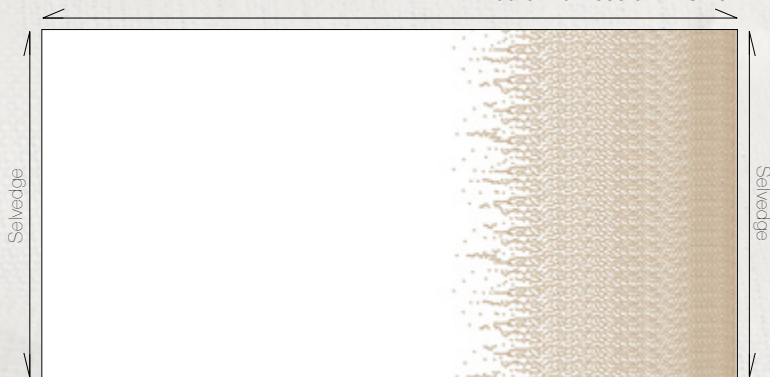
175575

Background Cerro off white



Corallo Piazzato

Fabric Width 300 cm/118 inch



Vertical repeat
55 cm/21,6 inch

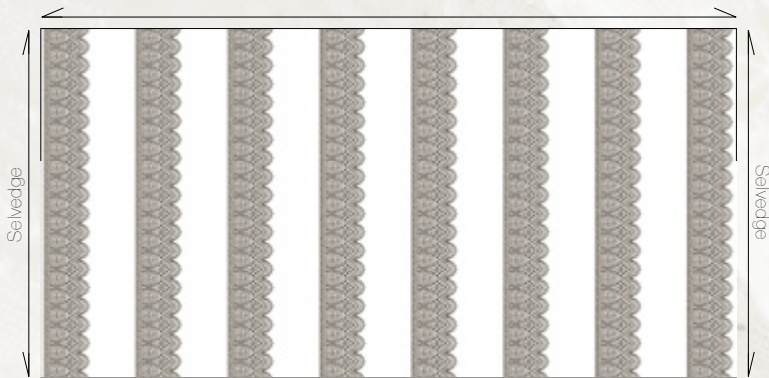
175901

Background Cerro off white



Flamenco

Fabric Width 300 cm/118 inch



Vertical repeat
40 cm/15,7 inch

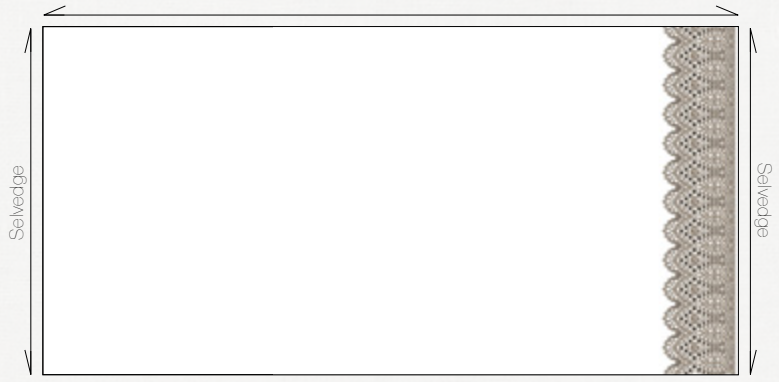
175587

Background Laveno Milky white



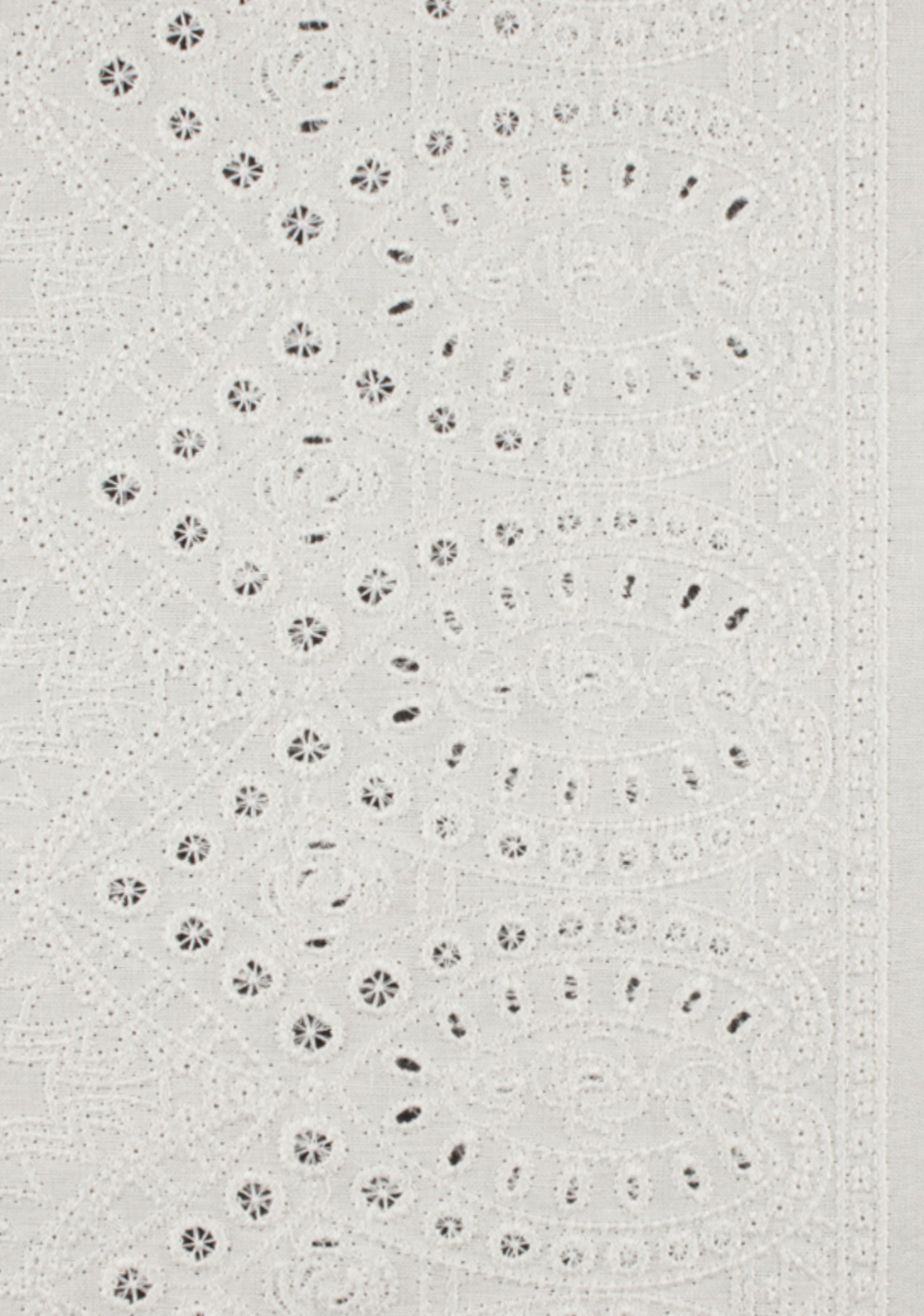
Flamenco Piazzato

Fabric Width 300 cm/118 inch



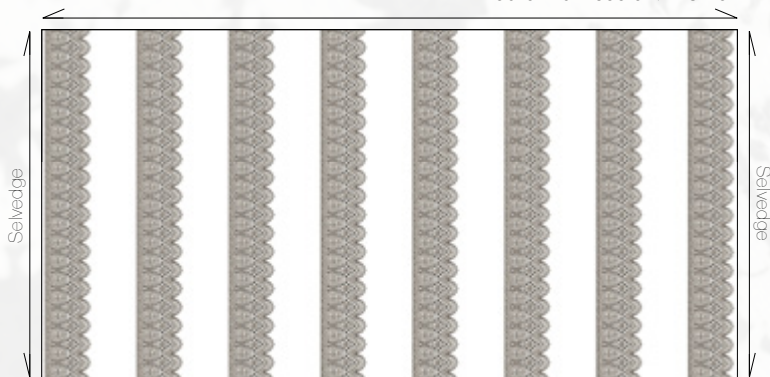
175891

Background Laveno milky white



Flamenco Black

Fabric Width 300 cm/118 inch



Vertical repeat
40 cm/15,7 inch

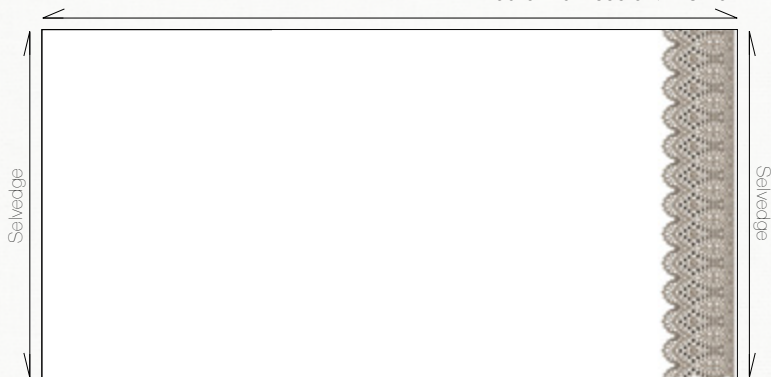
175588

Background Laveno optical white



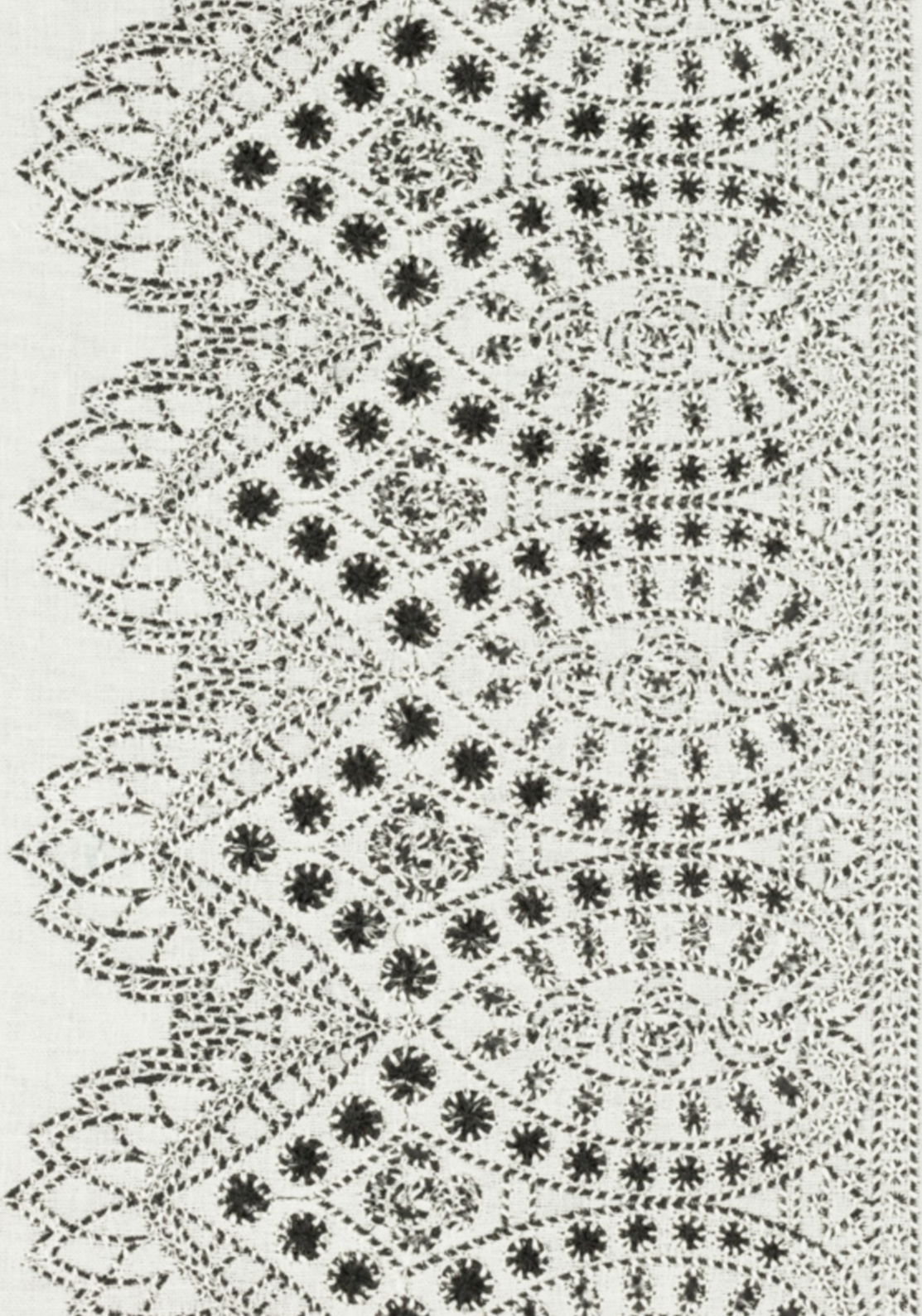
Flamenco Black Piazzato

Fabric Width 300 cm/118 inch



175892

Background Laveno optical white



Iris

Fabric Width 140 cm/55 inch



Vertical repeat
134 cm/53 inch

175589

Background Siena Optical white

175590

Background Siena Off white



Lady Zip

Fabric Width 120 cm / 47 inch



Vertical repeat
19 cm / 7,4 inch

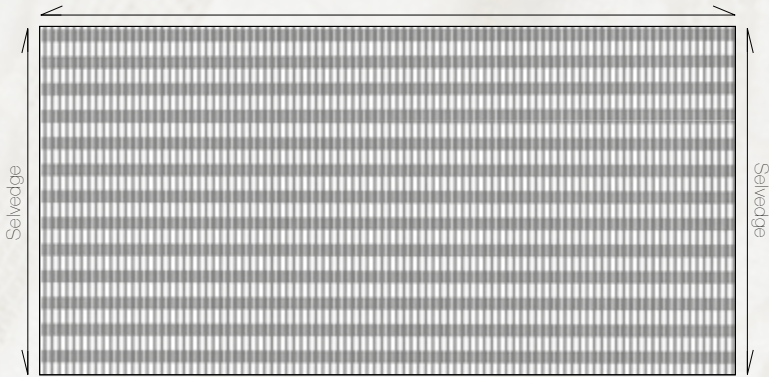
197526

Background Maremma White natural



Navette

Fabric Width 140 cm/ 55 inch



Vertical repeat
1.7 cm/0,66 inch

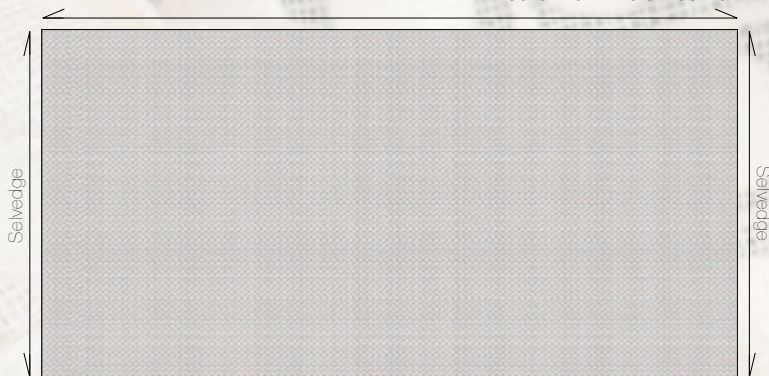
209370

Background Sgarzolino Off white



Paillettes

Fabric Width 140 cm 55 inch



Vertical repeat
1.7 cm / 0,66 inch

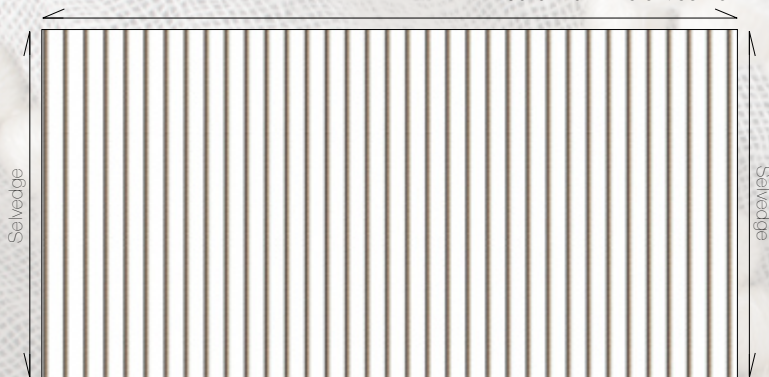
172538

Background Sgarzolino Off white



Perlino

Fabric Width 140 cm/55 inch



Vertical repeat
5 cm / 1,97 inch

172683

Background Sgarzolino Off white



Pigalle

Fabric Width 150 cm/59 inch



Vertical repeat
3,2 cm / 1,25 inch

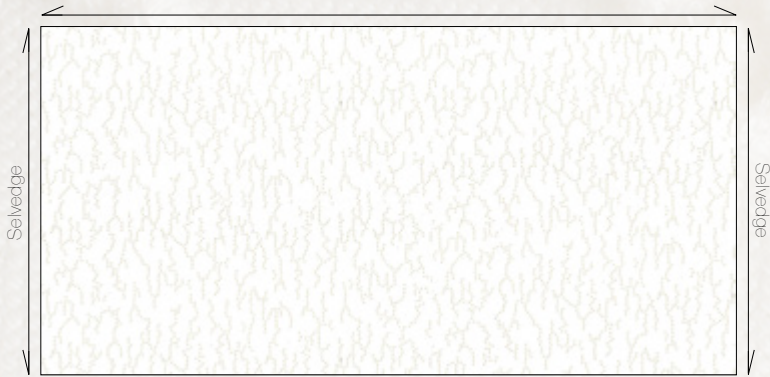
209371

Background Maremma natural



Stellino White

Fabric Width 140 cm/55 inch



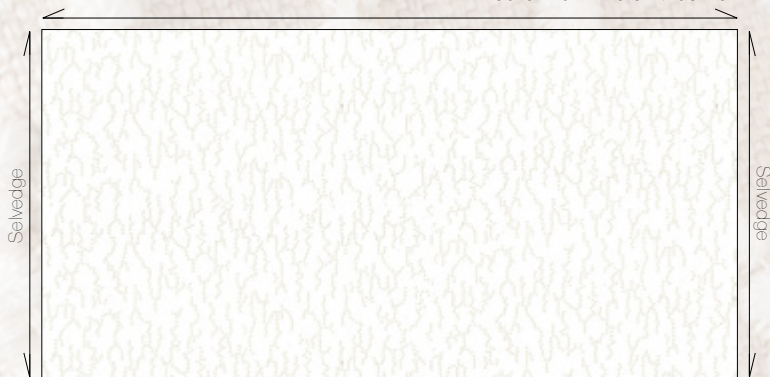
197508

Background Maremma White Natural



Stellino Natural

Fabric Width 140 cm / 55 inch



197517

Background Maremma natural



Tempestine

Fabric Width 140 cm/55 inch



209375

Background Gstaad cream



Vogue

Fabric Width 140 cm/55 inch



197520

Background Gstaad turtlesdove





Index

- 6 Cassiopea Broderie
- 8 Charleston
- 10 Coco
- 12 Corallo
- 14 Corallo Piazzato
- 16 Flamenco
- 18 Flamenco Piazzato
- 20 Flamenco Black
- 22 Flamenco Black Piazzato
- 24 Iris
- 26 Lady Zip
- 28 Navette
- 30 Paillettes
- 32 Perlino
- 34 Pigalle
- 36 Stellino White
- 38 Stellino Natural
- 40 Tempestine
- 42 Vogue



**HONG KONG
LONDON
MILANO
MÜNCHEN
NEW YORK
PARIS**

CEC-MILANO.COM